

**Residential Mortgage Survey
Results of Survey for July 2010**

(Value in HK\$ million)

	<u>July 2010</u>	<u>June 2010</u>
1. <u>New loans drawn down during the month</u>		
a. Value	25,928	30,817
M-o-M % change	-15.9%	6.5%
b. Number	11,331	13,521
2. <u>New loans approved during the month</u>		
a. Value	40,842	35,418
M-o-M % change	15.3%	-6.2%
b. Number	16,837	15,345
c. Average size	2.43	2.31
d. Loan-to-value ratio (%)	62.0	61.3
e. Contractual life (months)	273	262
f. Loans associated with co-financing schemes		
- Value	125	140
- Number	42	55
g. Type of property transaction		
- Value		
- Primary market	5,743	5,418
- Secondary market	27,748	21,275
- Refinancing	7,351	8,725
- Number		
- Primary market	1,148	1,713
- Secondary market	12,221	9,505
- Refinancing	3,468	4,127
h. New loans approved during the month but not yet drawn		
- Value	32,055	25,818
- Number	13,037	11,187
i. Number of applications (cases)	25,877	21,947
3. <u>Outstanding loans</u>		
a. Value	693,204	679,545
M-o-M % change	2.0%	0.6%
Y-o-Y % change	13.2%	13.1%
b. Loans associated with co-financing schemes		
Government-funded schemes:		
- Value	16,771	17,102
- Number	30,115	30,565
Schemes offered by the private sector:		
- Value	10,360	10,952
- Number	7,530	7,930
c. Delinquency ratio (%)		
- More than 3 months	0.02	0.03
- More than 6 months	0.01	0.02
d. Rescheduled loan ratio (%)	0.05	0.05
4. <u>Loans written off</u>		
a. Value of loans written off during the month	4	12
b. Loans written off over the past 12 months		
- Value	134	139
- As % of the average outstanding loans	*	*
5. <u>Interest rates on new loans approved during the month</u>		
a. With reference to BLR	11.4%	15.2%
(Breakdown is shown on an absolute interest rate basis)		
of which:		
Less than 2%	0.0%	0.0%
2% to less than 2.25%	7.3%	10.2%
2.25% to less than 2.5%	1.4%	1.5%
2.5% to less than 2.75%	0.8%	1.2%
2.75% to less than 3%	0.5%	0.5%
3% to less than 3.25%	0.5%	0.6%
3.25% to less than 3.5%	0.3%	0.4%
3.5% to less than 3.75%	0.2%	0.3%
3.75% to less than 4%	0.1%	0.1%
4% or more	0.3%	0.4%
b. With reference to HIBOR	87.4%	83.9%
c. Fixed rate	0.0%	0.0%
d. Others	1.2%	0.9%

Abbreviation:

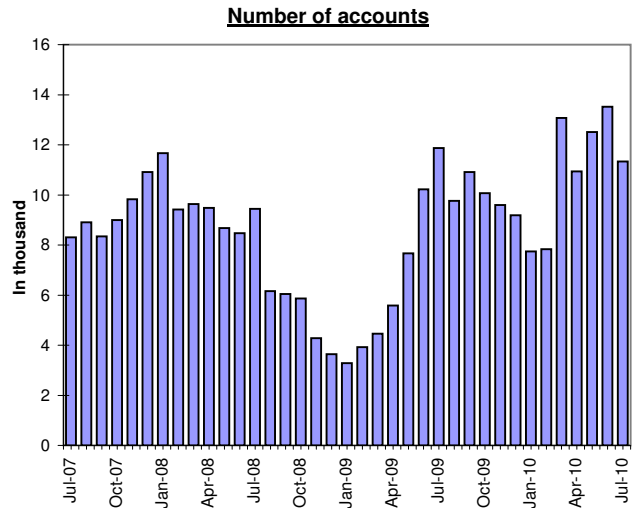
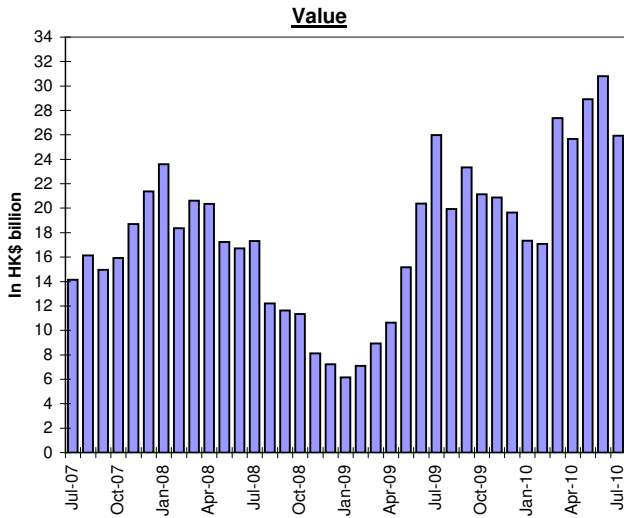
BLR refers to the best lending rate.

HIBOR refers to Hong Kong interbank offered rate.

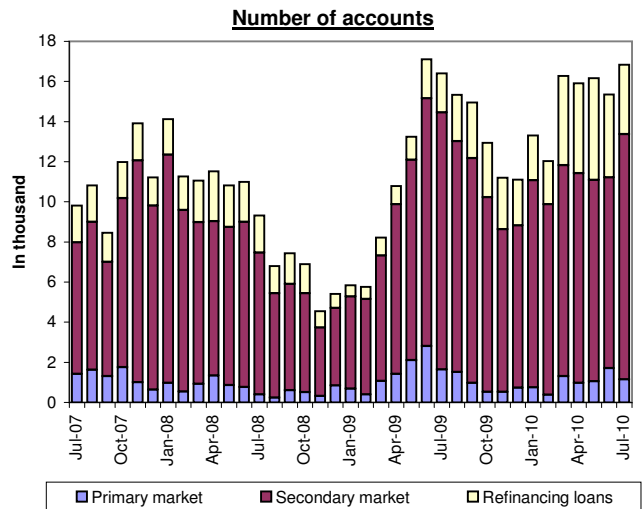
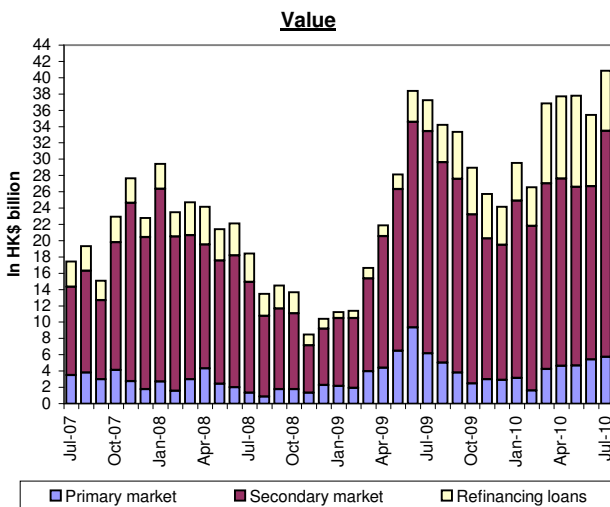
* less than 0.05%

Residential Mortgage Loans in Hong Kong

New Loans Drawn Down During the Month



New Loans Approved During the Month



■ Primary market
 ■ Secondary market
 ■ Refinancing loans

■ Primary market
 ■ Secondary market
 ■ Refinancing loans

Residential Mortgage Survey

Notes to Annex

1. **Residential mortgage loans** (RMLs) of the authorized institutions covered in this survey represent about 98% of the banking sector.
2. **RMLs** in this survey are loans (including refinancing loans) to private individuals for the purchase of residential properties, including uncompleted units, but other than those properties under the Home Ownership Scheme, the Private Sector Participation Scheme and the Tenants Purchase Scheme.
3. **New loans approved** are mortgage loans approved during the surveyed month. The loans can either be drawn down in the same month or in the following months. Loans that are approved but not yet drawn, which have implications for the amount of gross new loans made in the following months, are shown under the item "New loans approved during the month but not yet drawn".
4. **Delinquency ratio** is measured by a ratio of total amount of overdue loans to total outstanding loans.
5. **Rescheduled loan ratio** is measured by a ratio of total amount of rescheduled loans to total outstanding loans.
6. **Co-financing schemes** refer to those schemes that involve the provision of top-up finance by property developer(s) or other co-financier(s) in addition to mortgage loans advanced by authorized institutions. For loans associated with co-financing schemes, only the portion of loans advanced by reporting institutions is included in this survey.
7. **Average loan-to-value ratio and average contractual life** for new loans approved during the surveyed month are average figures weighted by the amount of new loans approved during the surveyed month by individual reporting institutions.
8. **Loans written off** over the past 12 months as a percentage of the average outstanding loans is calculated as: total value of loans written off during the past 12-month period as a percentage of the average outstanding loan value over the 12-month period [i.e. (opening + closing) ÷ 2].